

AirLink™ PinPoint X In-Vehicle Communications Platform

Fully-Featured 3G Mobile Broadband Platform

The AirLink™ PinPoint X gateway is a robust, intelligent communications platform for mobile data and tracking applications. With a high-precision GPS receiver and powerful processor, the PinPoint X provides “always on” mobile broadband data access and location tracking for mission critical field applications. In a sleek form factor with a rugged aluminum case, the PinPoint X is Mil-Spec certified for use in extreme environments, and expanded I/O functionality facilitates extensive remote instrumentation monitoring.

INTEGRATED SOLUTIONS FOR FIELD SERVICE

The Remote Application Protocol (RAP) embedded in ALEOS, enables the PinPoint X to be the foundation of a comprehensive field service and location deployment. RAP enables 3rd party GPS providers to deeply integrate their application with the PinPoint X and offer customers comprehensive solutions to manage fleets of vehicles.

In addition, a full suite of I/O ports and an embedded events reporting engine enable application services far beyond GPS tracking, such as vehicle sensors, man-down alarms, and many more.

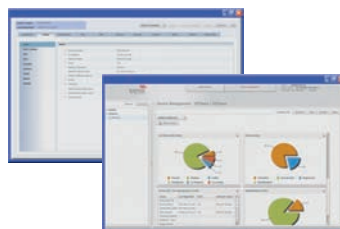
RUGGED INTELLIGENCE

ALEOS™, the long-standing industry benchmark for embedded intelligence, powers AirLink devices, and supports 24/7 always-on availability, persistent connectivity, end-to-end security, real-time two-way data exchange, and remote device management. Designed to meet the needs of industrial M2M, enterprise solutions and mobile applications, ALEOS features embedded machine protocols, routing and location protocols. To ensure reliable, advanced security, ALEOS includes IPsec VPN and GRE tunneling.

REMOTE MANAGEMENT

ALEOS powered devices include the AirLink suite of management tools enabling remote configuration, administration, and control of deployments of any size, from one device to thousands.

Together, ALEOS and the AirLink management tools enable customers to extend their enterprise by managing deployments from a central location, or anywhere with an Internet connection.



KEY BENEFITS:

- Multiple peripherals and external SIM access simplify integration
- Advanced processor optimizes performance on broadband data networks
- Seamless backwards compatibility ensures reliable and pervasive communications
- Remote management and configuration provide device access from anywhere via Internet
- Store-and-Forward prevents loss of GPS data



POWERED BY: 



AirLink™ PinPoint X In-Vehicle Communications Platform

Technical Specifications

PRODUCT FEATURES

- ALEOS Embedded Intelligence
- High-Speed Processor
- Multiple Interfaces, I/O Ports
- Mil-Spec Certified
- Low Power Mode
- 3 Year Warranty

SECURITY AND INTELLIGENCE

- IPsec VPN
- GRE Tunneling
- Events Reporting Engine
- Routing Protocols
- Highly Configurable

TECHNOLOGY

- HSUPA with fallback to:
HSDPA, UMTS, EDGE, GPRS
(MS-12), GSM

or

- EV-DO Rev. A with fallback to:
CDMA 1X EV-DO Rel 0,
CDMA 1xRTT, CDMA IS-95

BANDS

- Tri-Band UMTS/HSDPA/HSUPA
850, 1900, 2100 MHz
- Quad-Band GPRS/EDGE
850, 900, 1800, 1900 MHz
- Dual-Band UMTS/HSDPA
850, 1900 MHz

or

- Dual-Band EV-DO Rev. A
800, 1900 MHz

ENVIRONMENTAL

- Operating Temperature:
-30° to +70°C / -22° to +158°F
- Storage Temperature:
-40° to +85°C / -40° to +185°F

DIMENSIONS

- 162 mm x 40 mm x 109 mm
6.4 in x 1.6 in x 4.3 in
- 612 grams
21.5 oz

STANDARDS/APPROVALS

- FCC
- CE (EU-SKU)
- Industry Canada
- Mil-Std 810F
- RoHS
- Carrier Specific Approvals

HOST INTERFACES

- Ethernet: 10/100 Mbps RJ-45
- RS-232: DB9 DCE (300-230400
baud)
- I/O: 4 Digital, 4 Analog, 2 Relay
- Antenna Connections:
Cellular - 50 Ohm TNC
GPS - 50 Ohm SMA
Receive Diversity - 50 Ohm SMA

APPLICATION INTERFACES

- TCP/IP, UDP/IP, DHCP, HTTP,
SNMP, SMTP, SMS, MSCI, NMEA,
TAIP, GPS, Binary

LED INDICATORS

- Network
- Signal
- Activity
- Service
- GPS
- Power



APPLICATIONS:

- Field Force Automation
- Mobile Office
- Fleet Management
- Dispatch and Tracking
- Law Enforcement
- Fire and Rescue
- Vehicle Telemetry

